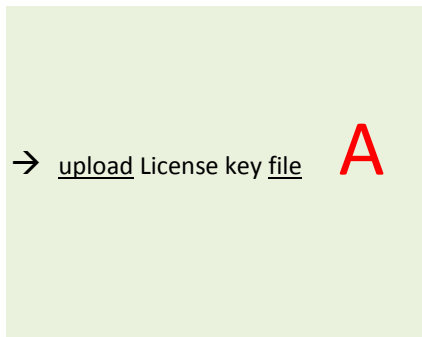


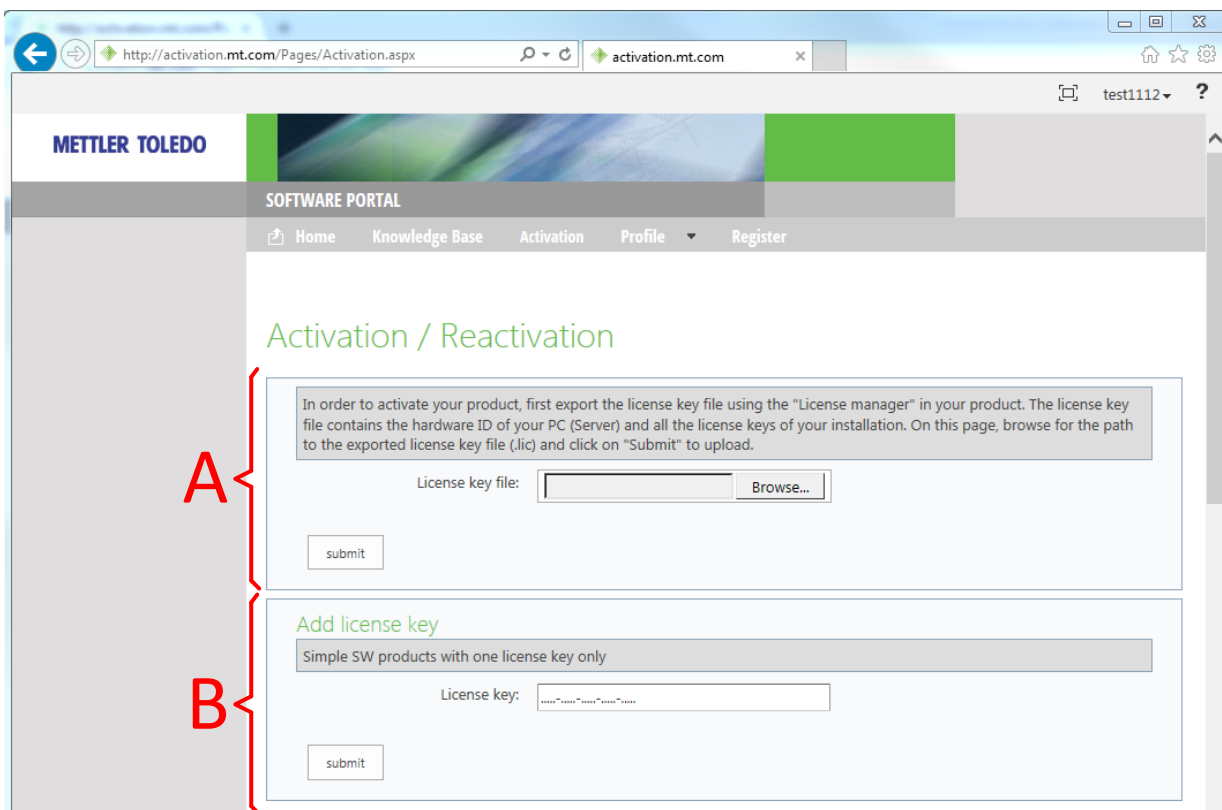
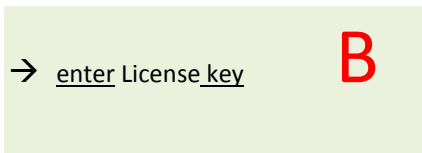
## How to activate simple software products on Software Portal

The following products may be activated on <https://activation.mt.com>

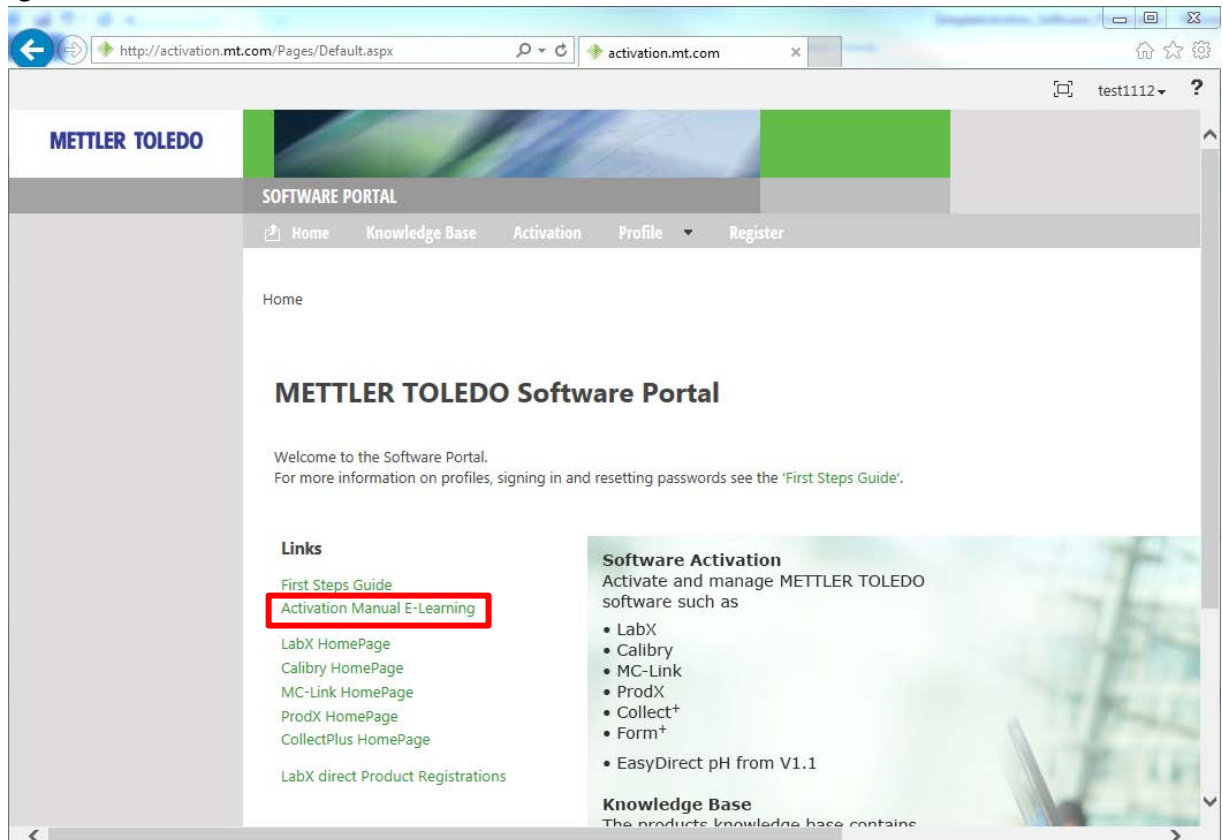
1. LabX
2. Calibry
3. MC Link
4. ProdX
5. Collect<sup>+</sup>
6. Form<sup>+</sup>



7. EasyDirect pH, from V1.1



If you have type **A** license keys, please refer to the link "Activation Manual E-Learning" in Main screen for instructions:



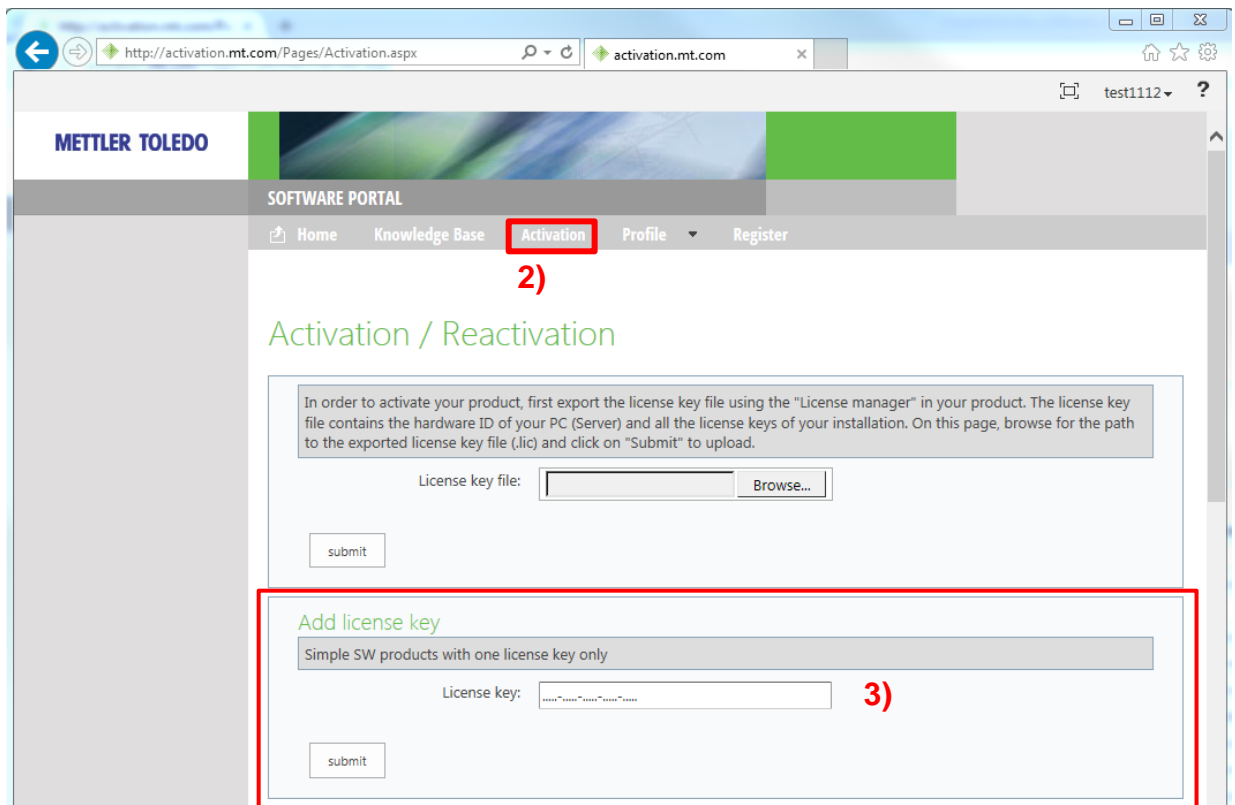
This guide describes how to activate a type **B** license key.

Preconditions:

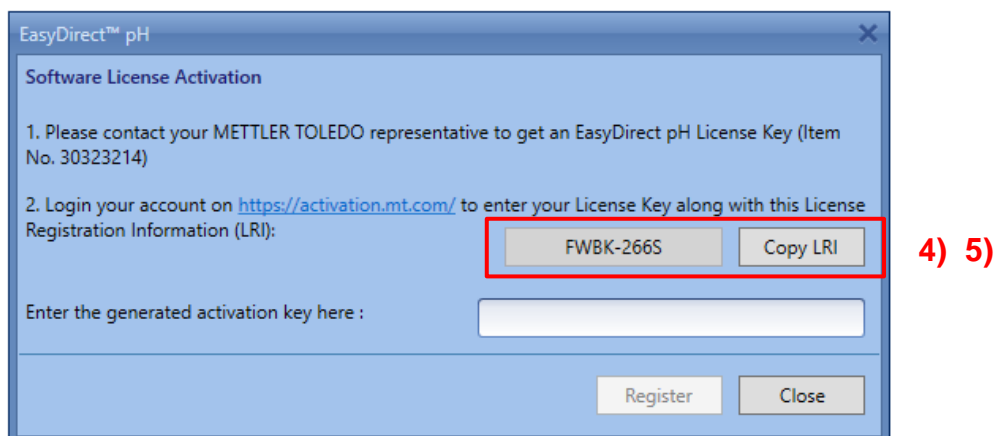
- You have a type **B** SW product installed on a PC
- You have a license key from a type **B** product

## Steps to activate a type **B** product:

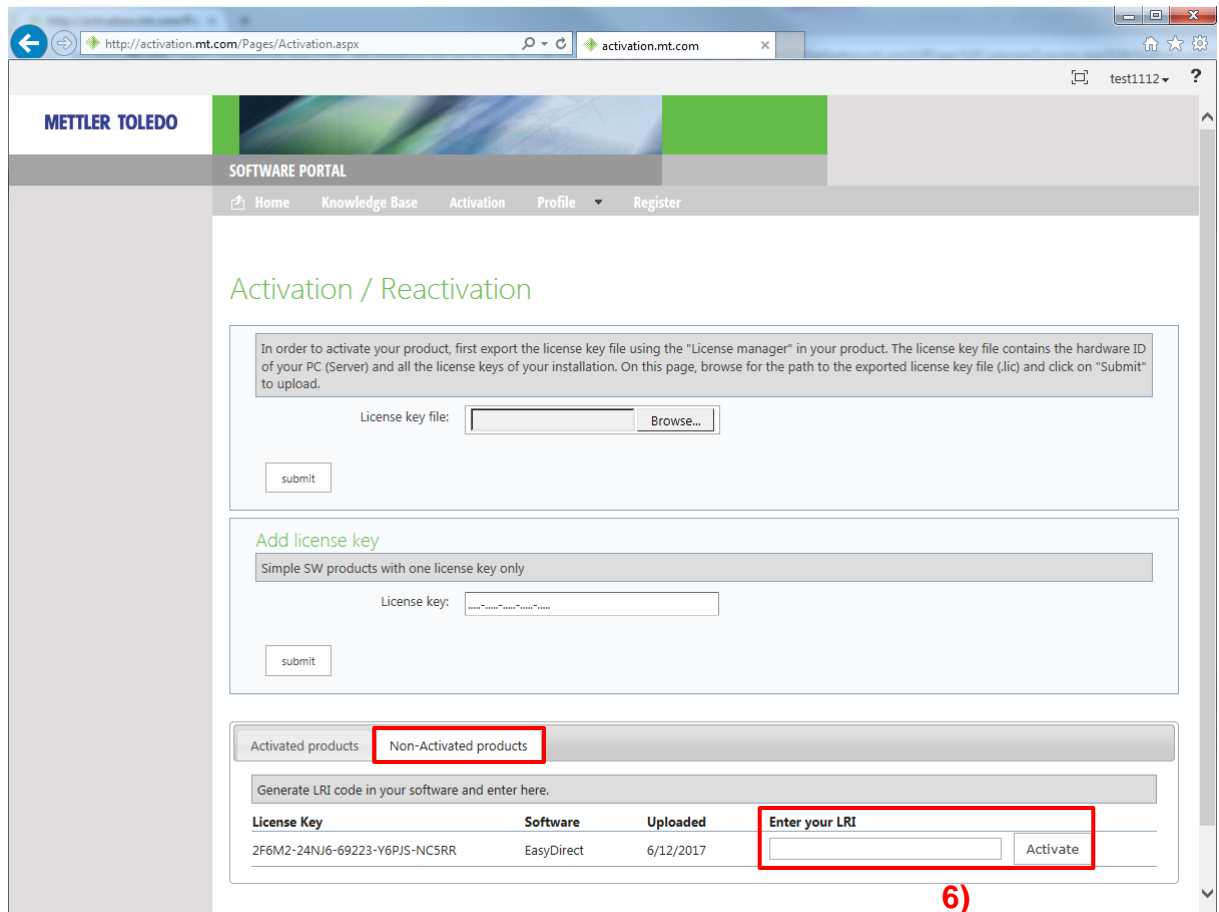
1. Sign in to Software Portal
2. Refer to "Activation"
3. Enter and submit your type **B** license key



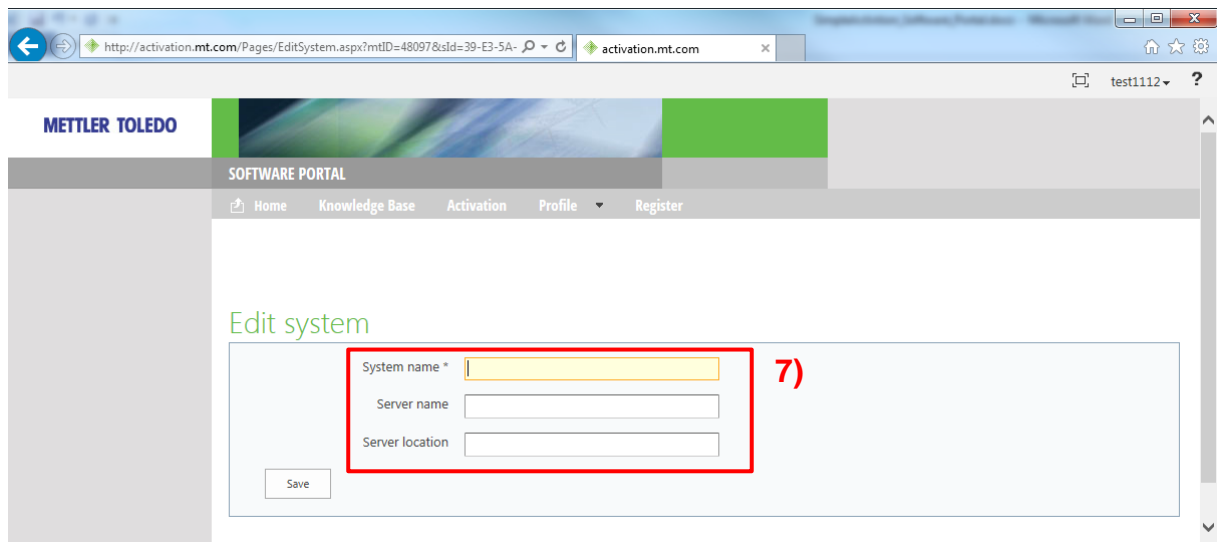
4. Refer to the type **B** software product, installed on the PC



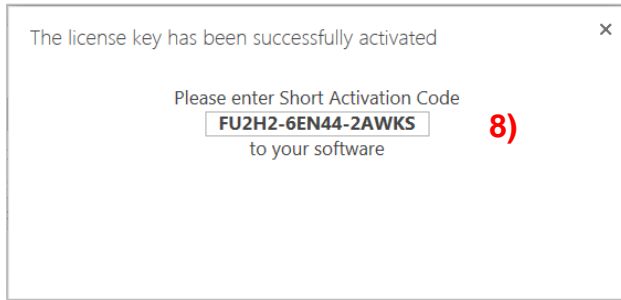
- 5. Copy License Registration Information (LRI)
- 6. Add the LRI to the previously uploaded license key and



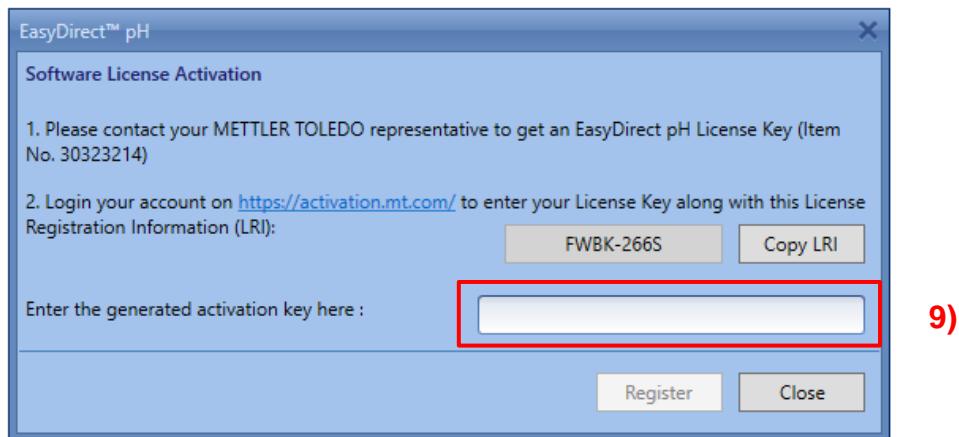
- 7. Add system information, at least a system name



8. Copy Short Activation Code (SAC) from pop-up box



9. Enter the Short Activation Code into the type **B** SW installed on PC



10. Your type **B** SW is now activated!

11. View your activated systems on Software Portal

**SOFTWARE PORTAL**

Home Knowledge Base **Activation** Profile Register

### Activation / Reactivation

In order to activate your product, first export the license key file using the "License manager" in your product. The license key file contains the hardware ID of your PC (Server) and all the license keys of your installation. On this page, browse for the path to the exported license key file (.lic) and click on "Submit" to upload.

License key file:

#### Add license key

Simple SW products with one license key only

License key:

Activated products Non-Activated products

The activation key file of the activation system can be downloaded by pressing the icon (📄)  
 Please import the activation key file in the License manager of your product installation in order to activate the software. Entering information into the various fields is not necessary, but it provides an overview, especially with several or larger systems.  
 The system informations can be changed by pressing the icon (✎) All license information can be viewed or edited with the icon (🔍)

Product name	System name	Server name	Server location	Hardware ID / LRI	
EasyDirect	Test201706121337			FSAD-266N	📄 ✎ 🔍 11)
LabX	Test201706111144			ALL6G-VKF2L- YE63F-F6S8K-ERFRX	📄 ✎ 🔍
EasyDirect	Test201706111138			BYK5-266N	📄 ✎ 🔍
EasyDirect	Test201706111100			FSAD-266N	📄 ✎ 🔍
LabX	Test201705041437			ALL6G-VKF2L- YE63F-F6S8K-ERFRV	📄 ✎ 🔍